

# Medeiros Family Farm

---

462 Lincoln St



# Parcels



## Acres

#1 6.93

#2 0.92

#3 21.09

#4 11.18

Total: 40.12



# Property

---





# Property





# Property

---





# Vision

## Possible Uses:

- Multi-use athletic fields (4+)
- Community playground
- Trails
- Community garden
- Historic learning center/programs





# Needs Analysis: Open Space, Trails, & Community Playground

---



- While Seekonk has been successful in preserving open space, establishing trail access, and opening our 1<sup>st</sup> community playground, demand exceeds availability
- This property has the potential to “check all the boxes” in terms of community access, range of potential uses, etc.
- Trails could meander the edges of fields, through open woodlands, and along wetland edges



# Needs Analysis: Athletic Fields

---



- Field availability & capacity haven't kept pace with increasing demand (soccer, field hockey, lacrosse, etc)
- Natural turf field use:
  - Recommended: 20-24 hrs/wk or 680 hrs/yr
  - Actual: 40 hrs/wk or 1,200 hrs/yr
- As a result, Seekonk's fields are over-used, resulting in decreased playability and safety



# Needs Analysis: Historic Preservation



- For over two centuries, Seekonk was largely composed of small family farms with commercial development limited to areas along Routes 6 & 44
- In recent decades, Seekonk has become more suburban and many family farms have been developed into subdivisions
- While Seekonk has made great strides in preserving open space in a number of ways, we continue to lose our historic structures and our connection to our local history



# Needs Analysis: Community Gardening & Farming

---



## Benefits:

- Part of historic landscape
- Build a stronger sense of community
- Opportunities for learning
- Promote healthier lifestyles
- Relieving stress and increasing wellness



# Proposed Use by Parcel



## Parcels #1 & #2: 7.85 acres

- Athletic fields (4)
- ADA Parking

## Parcel #3: 21.09 acres

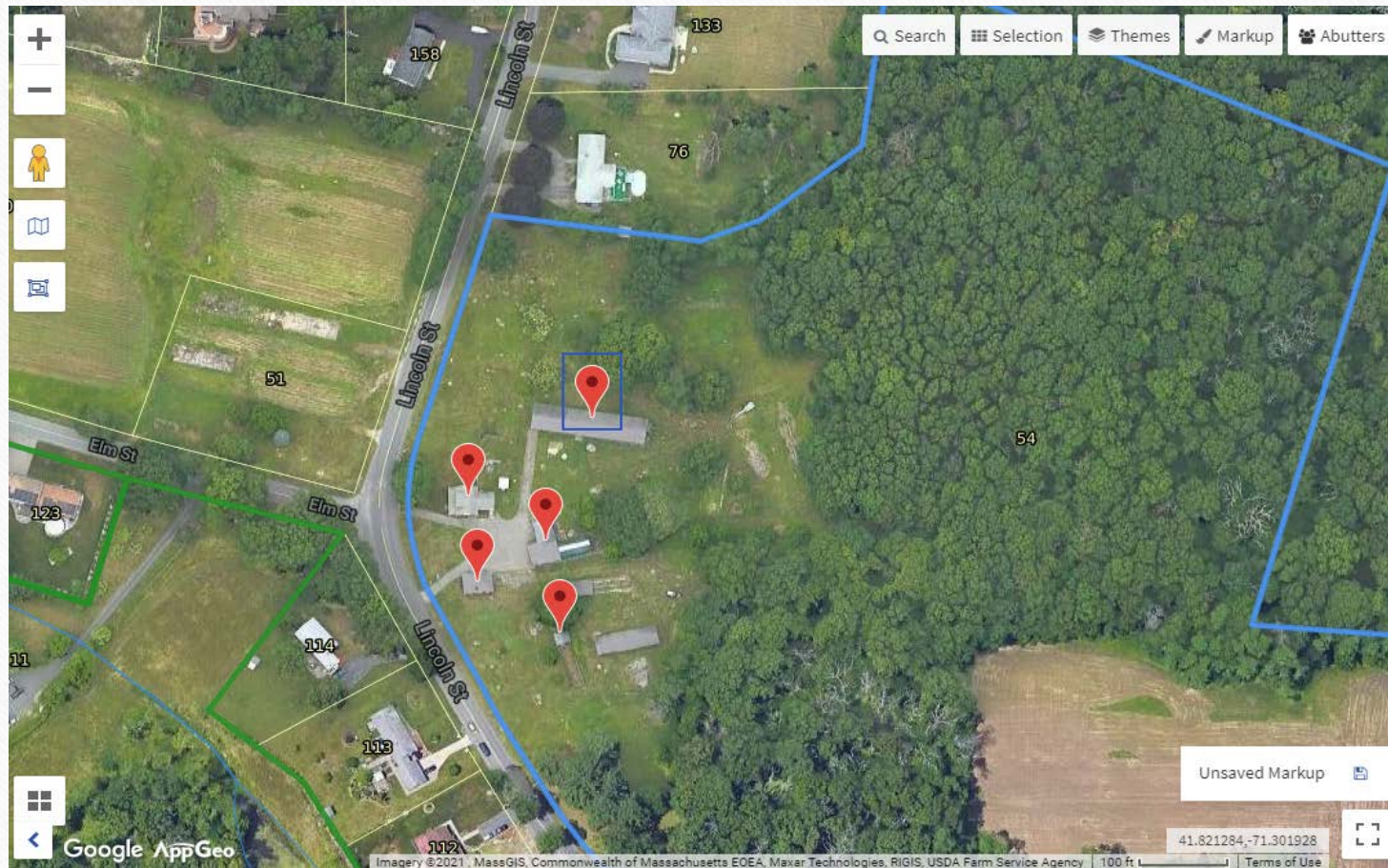
- Athletic fields (2) (3 acres)
- Historic preservation (see next slide) (2 acres)
- Open space w/trails (11 acres)
- Community gardens & agriculture (3 acres)
- Amenities (restrooms, parking, trailhead) (2 acres)

## Parcel #4: 11.18 acres

- Open space w/ trails



# Proposed Bldgs for Historic Preservation



## Farm House

(Proposed use: offices & storage space;  
no public access)

## Garage

(Proposed use: historic museum w/  
public access)

## Egg Barn

(Proposed use: historic museum w/  
public access)

## Chicken Coop

(Proposed use: Equipment storage and  
historic museum w/ limited public  
access)

## Greenhouse

(Proposed use: greenhouse)